

Join/Renew

[CLICK HERE](#)



**MARCH  
BIRTHSTONE**

**AQUAMARINE**

The serenely colored  
**aquamarine** invokes the  
tranquility of its  
namesake, the sea.

## FEBRUARY Monthly Makers Challenge **BLOOMS**

A month we often think of flowers—so we created our own! We asked members to cut them, shape them, stone set them, enamel them, and decorate them.

Create a bouquet or a single bloom, or use a floral pattern as an element in their design. This was the mission and mission was accomplished.



**John Rose 2Roses**  
showed a beautiful  
and very complicated  
piece with many parts  
and layers.



**Andrea Schoen**  
necklace made with a  
technique learned in  
Deb Karask class.



**Trudy Adler**  
Cactus Blooming

continues on page 9



I was interested in this workshop because the press forming could be accomplished with a bench vise if a hydraulic press was not available, and Angelina designed and demonstrated a truly excellent and well-organized procedure for this. I love processes not requiring soldering, as that process just opens up all sorts of other problems to be solved.

With this workshop, the box body, the hinge knuckles, and the catch were all made using the same sheet of metal, and only cutting, forming, and bending techniques were required.

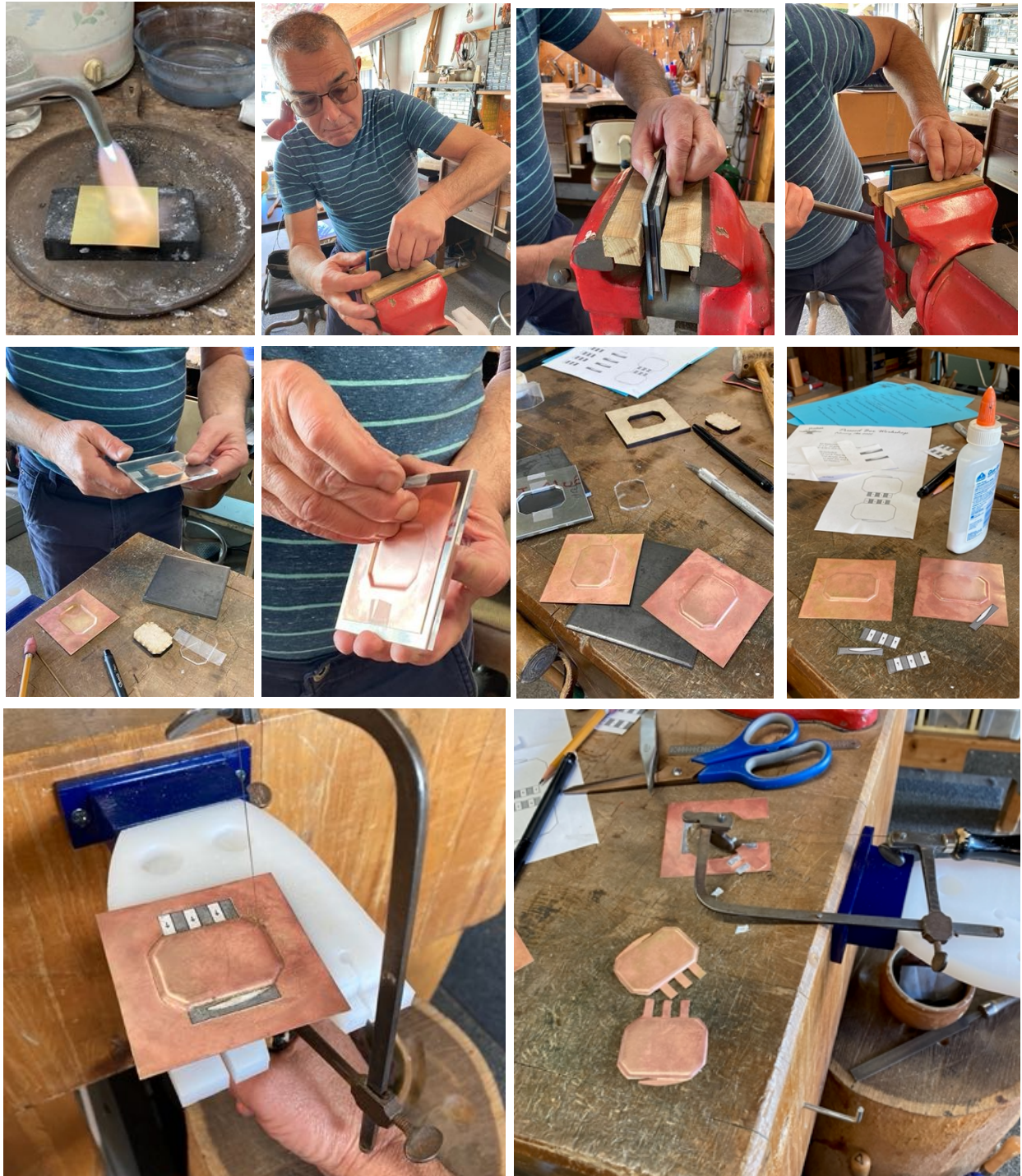
The workshop kit included dies and pushers of various materials, in addition to the materials needed to construct the box, which was 22ga brass sheet.

The first step was to anneal the metal, position it on the die, mark the metal to position the pusher, then sandwich the entire thing between two sheets of steel.

This layered sandwich is then gripped in the jaws of my vise and squeezed four times, each time rotating it 90 degrees. The metal gets annealed and squeezed again to refine the form.

These steps are repeated for the second side.

Paper templates (also included in the kit) are cut out and glued onto the metal to serve as a guide for your saw, and each half of the box is sawn out.

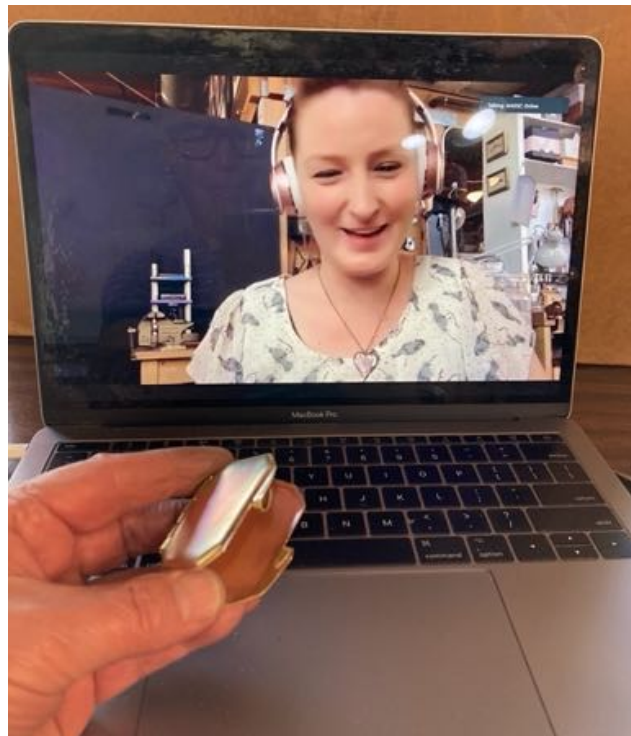
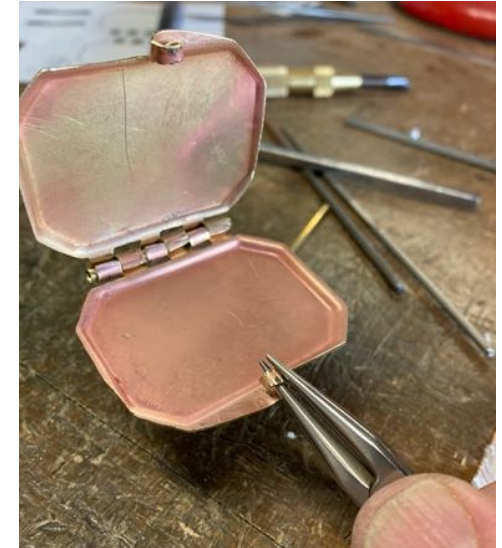
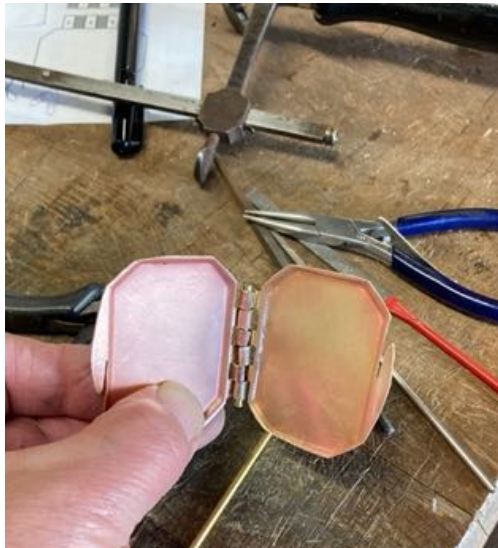




A length of brass tubing serves as the hinge pin, and the knuckles get bent around it, then the ends of the tube are flared to set it in place.

The catch is bent and everything is adjusted and tightened, and before you know it, you have a sweet little brass box!

Enjoy that snapping sound as it closes!



Photos by Bill & Lorraine Gallagher

## ASK BETSY! by Betsy Manheimer

**Q:** I want to use tubing to create a curved bail. How do I bend the tubing without creasing it?

**A:** While tubing can have a tendency to crimp when bent, there are a few things that will help you avoid this problem.

The first thing to remember is **anneal, anneal, anneal**. Depending on how much you want to bend it, you may have to do this many times. Also, make sure your tubing is fairly tight in or on the tool in order to have good, even pressure to prevent a collapse. Then try one of these techniques:

- If you want a gentle curve, use your hands. This is not too difficult with a long piece, but in any case, make sure you support both the inner and outer curve with your fingers. Go slowly and gently and don't force it to move. If it's not moving, anneal again. If you want a short piece, you can bend a longer piece and cut the ends off and use them for other things.
- I have had some success using ring and bracelet bending pliers with nylon jaws. Place the tubing between the jaws and very gently, with your fingers, push the sides around. Some companies (like Rio) sell the Miland-style metal jaw bending pliers. I have not used these for tubing, but they could also work. Just be aware of how your tubing fits within the jaws so you don't get dings or marks on your tube.
- Another way is to fill your tubing with some kind of substance that supports from the inside. You can fill the tube with sand or sugar to give some internal support and cap off the ends with cork or wax, bend, and pour out the material. You can also pour hot wax into the tube for support, bend, and then heat it to liquefy the wax so it will flow out.
- There are tube/pipe bending coils available at hardware stores that can also be used. These generally come in sets of four or five sizes. You place the coil over the tubing (leave some tubing sticking out so you have something to pull!) and manipulate the coil to bend the enclosed tubing. Since they're coils, they come off pretty easily.
- There is also some industrial tube bending equipment around, but it's often expensive and/or made for tubing larger than what you're probably using, so if you see something that looks interesting make sure to check sizing.

I'm sure there are also other ways to do this, but this should give you some options. Just work slowly and gently, **remember to anneal**, and you should have success with one or more of them.

See you next month, and send your questions and/or comments to y) or clamped down to be used safely. This is a given regardless of price or size.

See you next month, and send your questions and/or comments to [askmassc@gmail.com](mailto:askmassc@gmail.com)

## Tools that can bend wire and tubing



**Forming Pliers with Nylon Jaws**  
Item # 111613 (Rio Grande) \$13.64



**5-Piece Spring Type Tube Bender Set**  
Item # 60360 (Micro Mark Small Tool Specialists) \$7.95



# MASSC 2022

## MYSTERY METALS CHALLENGE

### MYSTERY METALS CHALLENGE

**GRAB THE SAW AND TURN ON THE PICKLE POT...  
IT'S ALMOST TIME FOR THE METALS CHALLENGE!**

The metals challenge is back, and in response to our recent survey, we've made some changes and improvements to ensure this year's event is more inclusive and more about challenging yourself rather than each other. And...as long as Covid cooperates...we're excited to be planning an in-person exhibition this year!! (Date/location TBD).

The detailed parameters of this year's challenge will only be revealed to those who register, but here are the big changes you'll want to note:

**-More freedom!** Participants will be free to use their own materials in whatever way they choose, there will be no box of supplies.

**-More time!** There will be nearly 5 months to finish!

**-More inclusive!** We want MASSC members at all levels to feel comfortable participating in this event. This year we've done away with professional judging and big cash prizes and instead invite everybody to challenge themselves to create something new. It's about pushing yourself, not beating the competition.

**-More casual!** Rather than a big expensive sit down luncheon, we're planning a FREE Metals Challenge Exhibition where we can snack, mingle, and enjoy a bunch of amazing work!

**-More swag!** This year every artist that turns in a qualified entry will receive a 2022 MC Book as their gift from MASSC! There may be more surprises at the Exhibition as well!

**REGISTRATION OPEN APRIL 1ST  
OPEN TO CURRENT MASSC MEMBERS ONLY  
ENTRY FEE: \$30**



### GET YOUR 2018 & 2019 METALS CHALLENGE BOOKS HERE!

Finally!!! It's been a crazy long wait, but we have them at last (and don't worry, 2020 and 2021 are in the works as I type this).

To keep things moving and to keep everything organized we're rolling out 2018 and 2019 first. Click the button below to reserve your copy. Payment info will be forwarded to you soon, but first we need to know how many of these babies to have printed.

Pricing will be same as always:

\$10 for Challenge Participants

\$20 for non-participants.

You may have them mailed or you can opt to pick them up in person to avoid paying shipping (pick-up in Laguna Niguel).

Thanks for your patience! -Erin Proctor, MASSC President

[CLICK TO RESERVE  
YOUR COPIES](#)

# MARCH 2022

Black/Bold = MASSC Sponsored Event

SUNDAY	MONDAY	TUESDAY	WEDNESDAY	THURSDAY	FRIDAY	SATURDAY
		<b>1</b> Metalwerx Stone Carving at the Bench Ryan Gardner 10 am-1:00 pm EST	<b>2</b>	<b>3</b> Metalwerx Stone Carving at the Bench Ryan Gardner 10 am-1:00 pm EST	<b>4</b>	<b>5</b>
<b>6</b>	<b>7</b>	<b>8</b>	<b>9</b>	<b>10</b>	<b>11</b>	<b>12</b>
<b>13</b>	<b>14</b> Metalwerx Creative Coaching: Jewelry Design-Fing Your Voice Paulette Werger 7:00-8:00 pm EST	<b>15</b>	<b>16</b>	<b>17</b>	<b>18</b>	<b>19</b>
<b>20</b> MONTHLY MAKERS CHALLENGE 10 AM PT Utensils	<b>21</b>	<b>22</b>	<b>23</b> Adam's Forge Letter Opener In-person Discovery Class 6pm-10pm PT	<b>24</b>	<b>25</b> Silvera Jewelry School Where's The Clasp? w/ Alison Antelman 10:00-5:00 pm PT	<b>26</b> Silvera Jewelry School Where's The Clasp? w/ Alison Antelman 10:00-5:00 pm PT
<b>27</b> Silvera Jewelry School FREE Jewelry Talk: Gabrielle S. Castonguay 2:00-3:30 pm PT	<b>28</b>	<b>29</b>	<b>30</b>	<b>31</b>		

# APRIL 2022

Black/Bold = MASSC Sponsored Event

SUNDAY	MONDAY	TUESDAY	WEDNESDAY	THURSDAY	FRIDAY	SATURDAY
					<div>1</div> <div>MASSC MYSTERY METALS CHALLENGE</div> <div>Registration Opens!</div>	<div>2</div> <div>MASSC Board Meeting</div> <div>10 AM PT</div> <div>All Members Welcome</div> <div><a href="#">Click to RSVP</a></div>
<div>3</div> <div>Diane Weimer's Studio</div> <div>Chains with Joanna Golberg</div> <div>3 Days</div> <div>April 1, 2, 3</div>	<div>4</div>	<div>5</div>	<div>6</div> <div>Adam's Forge</div> <div>Meat Turner</div> <div>In-person</div> <div>Discovery Class</div> <div>6pm-10pm PT</div>	<div>7</div> <div>Silvera Jewelry School</div> <div>Polish and Finish</div> <div>2:00-5:00 pm PT</div>	<div>8</div>	<div>9</div> <div>WHAT DO YOU COLLECT?</div> <div>Tell us Show us</div> <div>10 AM PT</div>
<div>10</div> <div>Silvera Jewelry School</div> <div>FREE Jewelry Talk:</div> <div>Fine Stone Inlay with Fati Genese</div> <div>2:00-3:30 pm PT</div>	<div>11</div>	<div>12</div>	<div>13</div>	<div>14</div> <div>Silvera Jewelry School</div> <div>Polish and Finish</div> <div>2:00-5:00 pm PT</div>	<div>15</div>	<div>16</div>
<div>17</div>	<div>18</div>	<div>19</div>	<div>20</div>	<div>21</div> <div>The Loft Jewelry Studio</div> <div>From The Garden</div> <div>Nicole Ringgold</div> <div>5 Days</div> <div>April 21st-25th</div>	<div>22</div>	<div>23</div> <div>Anneville Studio</div> <div>Mokume Gane</div> <div>Chisel Patterning</div> <div>Sat. &amp; Sun</div> <div>10:00-4:00 pm PT</div>
<div>24</div> <div>MONTHLY MAKERS CHALLENGE</div> <div>10 AM PT</div> <div>Miniatures</div>	<div>25</div>	<div>26</div>	<div>27</div>	<div>28</div>	<div>29</div> <div>Diane Weimer's Studio</div> <div>Inspired by the Ocean</div> <div>Nicole Ringgold</div> <div>5 Days</div> <div>April 29, 30 May 1, 2, 3</div>	<div>30</div> <div>Adam's Forge</div> <div>Box Jaw Tongs</div> <div>In-person class</div> <div>9am-3pm PT</div>

# MAY 2022

Black/Bold = MASSC Sponsored Event

SUNDAY	MONDAY	TUESDAY	WEDNESDAY	THURSDAY	FRIDAY	SATURDAY
1	2	3 Diane Weimer's Studio Inspired By The Ocean Nicole Ringgold 5 Days April 29th-May 3rd	4	5	6	7
8	9	10	11 Adam's Forge Letter Opener In-person Discovery Class 6pm-10pm PT	12	13	14
15	16	17	18	19	20	21
22 MONTHLY MAKERS CHALLENGE 10 AM PT Natural Materials	23	24	25 Adam's Forge Meat Turner In-person Discovery Class 6pm-10pm PT	26	27	28
29 Adam's Forge Magic Wands In-person Discovery Class 9am-1pm PT	30	31				



## Alexandra Ramos

As the Covid pandemic hit, my jewelry classes at El Camino College were initially canceled and then switched to online learning. That brought many challenges, as at home, students didn't have the equipment, tools, space, material, or overall conditions to work on the initial projects.

With the orientation of my outstanding Jewelry instructor Irene Mori, we were motivated to think outside the box and explore new ways and unexpected materials to fabricate jewelry from home.

For this project, I wanted to make a love statement that was captivating and mystical. Inspired by the love symbol from Real Fairies Magic, I turned it into a pendant. I then transferred the design to a copper sheet and sawed the different parts of the piece (the intricate design and the brass backpiece). Initially, because I could not use fire to solder, I intended to use the prongs to join the copper and brass parts together, but since I was not pleased with the aesthetic, I opted to use epoxy resin.

To fill the inner spaces, I have used Rockite Cement, and because I wanted a multi-colored piece, I made tests of mixing the cement with acrylic paints until I achieved the desired result. After filling the spaces with the colored cement, I sanded, polished the piece, and finished with a thin layer of epoxy resin to leave a clear and smooth coating. I used a light brown faux leather cord to assemble the necklace.

This experience was fascinating and encouraged me to take a more adventurous approach towards exploring new combinations of materials to make jewelry, such as resin and polymer clay, which require minimal tools and equipment.

After completing my Jewelry Design and Fabrication Certificate, I was more confident in my creative skills, propelling me to explore more fine arts, like painting and sculpting, and motivating me to open my own business as an Artist.



**Alexandra Ramos** with her love symbol necklace inspired from Real Fairies Magic





**John Rose** I challenged myself to use a wide variety of alternative materials in a single piece. Fordite was at the top of the list as I have been exploring different methods of using this material beyond traditional cabochons. The flower vase motif provided a perfect platform to incorporate many different materials because it would accommodate a wide range of color. Ebony was selected as the base to provide a rich black ground to contrast with the colors of the flowers.

The design was inspired by 18th century pietre dura stonework. For this reason Fordite was selected for the frame as the tonality and scale recalled the highly figured marble often used in the 18th century works. A selection of woods was prepared, dyed and laminated to create the model for the vase.

The most challenging aspect of the project was the selection of material to create the flowers. Color, surface sheen, opacity and schiller were all considered to arrive at a balanced palette. Carving individual flowers presented its own challenges due to the extreme small scale. A variety of rotary burs and custom made micro chisels were employed to create each flower.

A custom forged chain and pierced back plate finish the design.



**Virginia Hyatt** A few pieces started, from my scrap box, using to create some floral items. Also pulled out the opals to create flower setting.



**Andrea Schoen** creating some floral earrings and a pendant, designing earring pairs that are similar but not matching.



**Trudy Adler** showcasing some real life pods and flowers casted.



**Ruth Kaplan** not quite done, opals still need to be set.

A new year has begun and that means a new monthly challenge list! This is NOT a competition, but rather a chance to challenge ones self with a new theme every month. This past year of projects has given us a time to socialize with others, but more importantly for our craft, it has allowed us to share our challenges, observations, tools and techniques with each other. This is a time to challenge *ourselves*, and it's a great way for all of us to learn from each other, no matter what your skill level is. We encourage everyone to join us! All skill levels are welcome and you can attend just to watch and listen, or to chime in and ask questions about a project you are working on and to show us your progress. We have listed the monthly themes below so that you can get inspired by a theme that resonates with you, allowing time for the design and creative process. Still stumped? No inspiration? Look no further than Lapidary Journal's Jewelry Artist magazine for a project and adapt it to the theme-all the instructions and supply list is there. And at the day of the event, we are here to answer any questions on places you got stuck.

Please join us, share a project, listen in or add to the conversation, add a tool or technique that would have helped in the execution of the project. This is a free and safe space for everyone who'd like to join us. If you have suggestions as to how you would like this to be or something to add to the process please let us know. Your participation and input is valuable to make this fun for all. Here's to a very creative 2022!

## January

### Inspirational Words/or Messages

Starting the new year with a fresh new perspective, with words to live by or to inspire oneself. We usually start the new year with resolutions. Use your words to create something meaningful. Stamping, engraving, piercing, carving wax, etching...there are so many ways to get your message out there.

## February

### Blooms

A month we often think of flowers—so let's create our own. Cut them, shape them, stone set them, enamel them, and decorate them. Create a bouquet or a single bloom, or use a floral pattern as an element in your design. We can't wait to see your creations!

## March

### Utensils

Always wanted to make a spoon? This is your time to show off your metal skills at the table. Cutting, dabbing, shaping, decorating...there are so many different ways to go. We are really looking forward to seeing what unique and useful utensils you can create.

## April

### Miniatures

What was once large is now small. Have some fun with making things tiny. Does changing the scale of an object create its own challenge? Let us know, anything goes. Go big, but think small!

## May

### Natural Materials

Let's combine different organic materials together, metal and wood, metal and stones, use these materials to envision something from the natural world. What challenges do you face in setting the object and how do you stabilize fragile objects?

## June

### Weaving/Stitching

This often makes us think of chains, but there are so many directions that you can go: cold connections, woven "fabric" embellishments, mesh screens, 3-D objects, baskets or... This is going to be a very interesting project.

## July

### "a secret" (or what's hidden inside)

Boxes, Lockets, anything can contain a hidden item or a surprise. What about hidden springs that activate once moved or opened? Can 1 item become 2 different items when taken apart? Hollow forms is something we have done before—but this takes it to a new level.

## August

### Five tool challenge

To create the object of your choice, you can only use the 5 tools highlighted below. We are so obsessed with having the right tool for each action that we create. This challenge takes us back to basics when we first started with a few simple tools: a **foredom** (includes all the bits), **pliers** (basic only), **hammer**, **anvil or bench block**, and **saw frame**. A **bench pin** is part of the bench so can be used, along with your **solder station**. This is a tough one! A lot of planning will be required, and we'll practice thinking through the project from beginning to end, and resisting the temptation to grab that favorite specialty tool! Just the basics!

## September

### Ancient technique or historical influence

We all seem to look to the past for style and inspiration, and we all have our favorite places in time. Will you go centuries past, or more contemporary with Art Deco or Mid-Century Modern? With so many directions to go, it will be fun to see what period or technique everyone chooses.

## October

### Kinetics/Motion

Get some action into your pieces, make it do something! Will you have a piece hanging by a wire, jump ring or pop open with a spring? Will your piece spin or twirl around your finger? These type of pieces are always challenging to engineer and balance properly but once done they are truly amazing.

## November

### Color

Coloring metal is an art unto itself, adding patinas can really change up a piece, but what can you do differently with color to add interest to your piece? Is it titanium or niobium? Married metals, plastics, colored pencils, colored gem stones and embedded resins... not to mention the multitude of products out there to add color to our pieces such as enameling, oxidation, epoxies, Corlite and wood to name a few.

## December

### Ornaments

It's time to decorate for the season! We celebrate different things in different ways but we all have MAKING in common! Make a bauble to hang or display that celebrates your fav holiday or make a piece of winter decor!



# Extras of Interest & Member Perks

## Schools & Organizations

### **Adam's Forge**

In-person blacksmithing classes

<https://adamsforge.org>

Los Angeles, CA

### **GRS Tools and Training Facility**

Professional and beginning stone setting, engraving, inlay and sculpting metal classes

<https://grs.com/facility/> <https://grs.com/cost/>

### **Idyllwild Arts**

Summer Adult Metals Week Program

Summer Native American Program

[idyllwildarts.org](http://idyllwildarts.org)

951-359-2171

Idyllwild, CA

### **Little Metal Foxes**

Interactive online classes

[info@littlemetalfoxes.com](mailto:info@littlemetalfoxes.com)

Seattle, WA

### **Metalwerx**

Classes both online and in-person

[info@Metalwerx.com](mailto:info@Metalwerx.com)

781-891-3854

Waltham, MA

### **Silvera Jewelry School**

Free lectures monthly, Zoom & in-person classes

[silverajewelry.com](http://silverajewelry.com)

510-868-4908

Berkeley, CA

## Classes by MASSC members:

### **Nohline L'Ecuyer**

**The Loft Jewelry Studio**

<https://www.theloftjewelrystudio.com>

### **Diane Weimer**

Year-round classes from world class artists

<https://dianeweimer.com/workshops>

### **Erin Proctor**

Private classes in a variety of techniques

<http://www.saturn5studio.com>

**ARE YOU A MASSC MEMBER OFFERING  
CLASSES/WORKSHOPS?  
LET US KNOW AND GET LISTED!  
[massc.editor@gmail.com](mailto:massc.editor@gmail.com)**

## **Join or Renew Membership: [Click Here](#)**

### **Become a member**

If you're joining us for the first time, then hooray! We can't wait to share all of our exciting events with you this year!

Learn all about your member benefits and register here!

Membership is good from the date you register until December 31, 2021.

### **Here are some reasons to think about joining:**

- Receive Members Only access to Video Library!
- Special pricing on MASSC sponsored workshops & access to Members Only classes and events like the Jewelry District Vendor Tour (online this year), competitions like the Metals Challenge, and more!

### **Membership Dues for 2022**

**Individual** \$50

**Dual** \$75

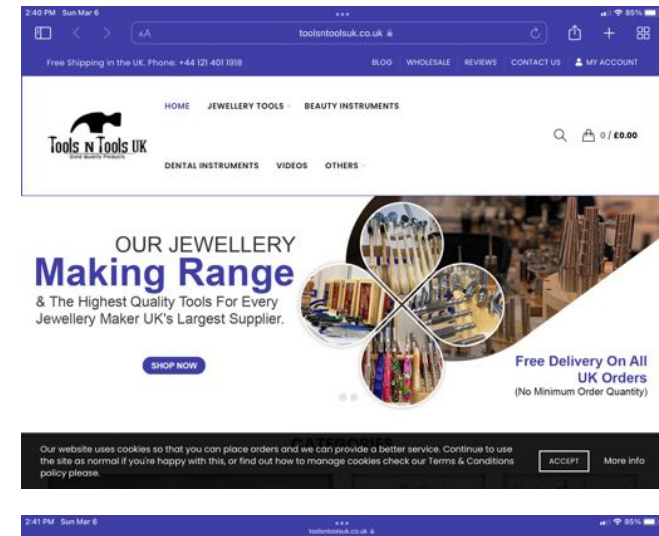
**Student** \$30

**Consider sponsoring a student membership!**

## Resources

## **[www.Toolsntoolsuk.co.uk](http://www.Toolsntoolsuk.co.uk)**

is one of my go to all around tool resources. Their wide range of tools has practically everything you will need for your studio. I love their Eurotool plier sets such as the parallel pliers and form forming pliers. Their prices as great and shipping is free on most items and free for most.



## MASSC Board Members

President: Erin Proctor  
[massc.president@gmail.com](mailto:massc.president@gmail.com)

Vice President, Program Chair: Seat is open

Vice President, Operations: Angelina Smith  
[massc.vp.ops@gmail.com](mailto:massc.vp.ops@gmail.com)

Secretary: Lori Hooks  
[massc.secretary@gmail.com](mailto:massc.secretary@gmail.com)

Treasurer: Stella Schloss  
[massc.treasurer@gmail.com](mailto:massc.treasurer@gmail.com)

## Members At Large

John Rose, MASSC Social Media  
[social.massc@gmail.com](mailto:social.massc@gmail.com)

Ruth Kaplan, Newsletter Editor  
[massc.editor@gmail.com](mailto:massc.editor@gmail.com)

Virginia Hyatt, Newsletter Team  
[massc.editor@gmail.com](mailto:massc.editor@gmail.com)

## Other MASSC Volunteers:

Membership Chair: Tigre Sheets  
[join.massc@gmail.com](mailto:join.massc@gmail.com)

Fundraising Chair: Kiki Gerardo  
[kikig@pacbell.net](mailto:kikig@pacbell.net)

## Contributors

Trudy Adler  
Bill Gallagher  
Virginia (Ginny) Hyatt  
Ruth Kaplan  
Andrea Harvin-Kennington  
Betsy Manheimer  
Erin Proctor  
Alexandra Ramos  
John Rose  
Andrea Schoen  
Jean Vormelker

## Thank you to our sponsors

Tim McCreight, Brynmorgan Press  
<https://www.brynmorgen.com>

All Craft USA  
<https://www.allcraftusa.com>

A to Z Jewelry Tools  
<https://atoztoolsonline.com>

Fire Mountain Gems  
<https://www.firemountaingems.com>

NC Black  
<https://www.ncblack.com>

Rio Grande Jewelry  
<https://www.riogrande.com>

Sheltech  
[www.sheltech.net](http://www.sheltech.net)

Trish McAleer  
<http://www.metalcorrugation.com>

## Follow MASSC:



@metalartsociety

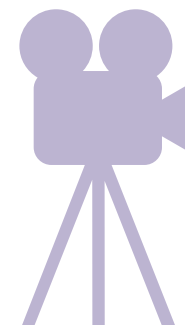


The Metal Arts Society  
of Southern California

## We need you!

## We need video editors!

Contact [massc.president@gmail.com](mailto:massc.president@gmail.com)  
if interested!



### Any member can contribute to this newsletter:

- Always looking for your tips and or techniques in any of your process to creating your pieces.
- Photos of your work can be featured in our MASSC Member Gallery or What's on your Bench. For that —looking for 3 to 4 photos of a collection that works together.
- If you have any questions, reach out and we can help you:

[massc.editor@gmail.com](mailto:massc.editor@gmail.com)